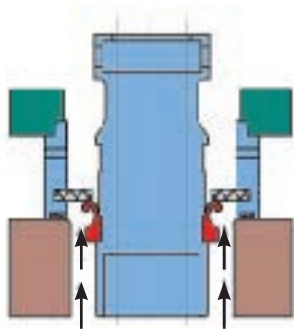


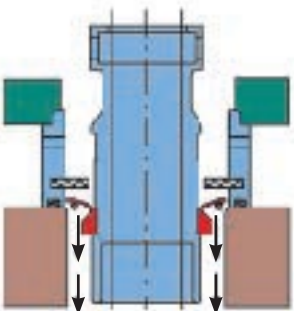


# KD CHEMICAL RESISTANT VERTICAL PUMP

STOP



NORMAL



## CHEMICAL VAPOR AND DRY VAPOR SEAL

When the motor is operating, the lid of the vapor seal is forced open by centrifugal force, thus no friction results. Once the motor stops, the lid bounces back to completely stop any leakage of chemical vapor. Moreover, the oil seal, which is located above the vapor seal, can protect the motor and bearing against chemical corrosion and can prolong the used life of the motor and pump.

## FEATURES

- Resistance to high heat and corrosion
- Dry vapor seal to prevent pumps and bearings from being etched by chemical gas and prolong the using life of pump.
- For etching spraying equipments, cooling circulating and be used with filter

# ORDERING CODES

KD - 50 VK 5 6 - V F B

**Model**

**In-Outlet**

- 15 - 1/2"
- 20 - 3/4"
- 25 - 1"
- 32 - 1.25"
- 40 - 1.5"
- 50 - 2"
- 65 - 2.5"
- 80 - 3"
- 100 - 4"

**Specific Weight**

- VK - 1.1
- VP - 1.4

**Power**

- 1/15 HP
- 1/8 HP
- 1/6 HP
- 1/4 HP
- 1/3 HP
- 1/2 HP
- 1 HP
- 2 HP
- 3 HP
- 4 HP
- 5 HP
- 7.5 HP
- 10 HP
- 15 HP

**Frequency**

- 5 - 50Hz
- 6 - 60Hz

**Rubber**

- N - NBR
- E - EPDM
- V - VITON
- T - PTFE

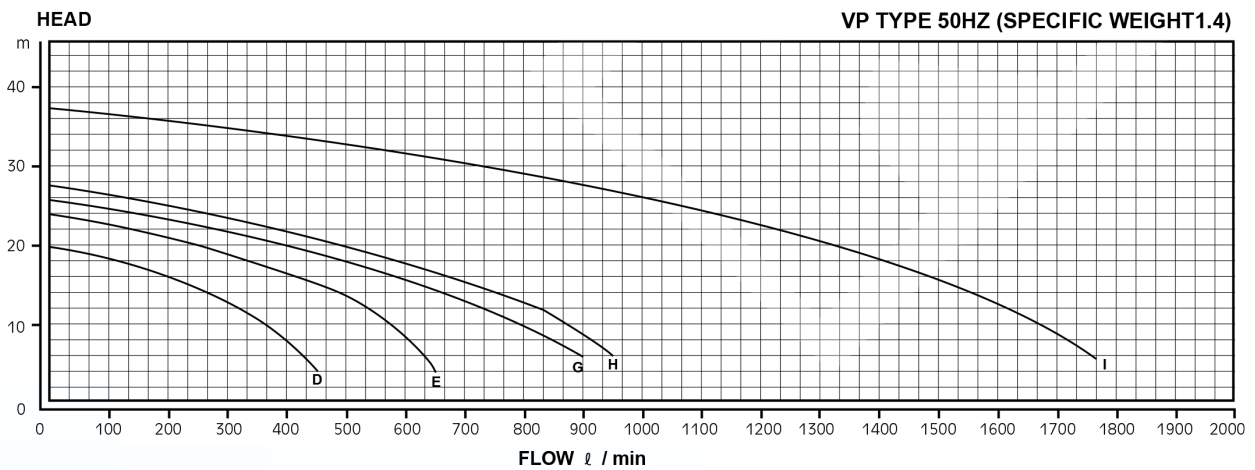
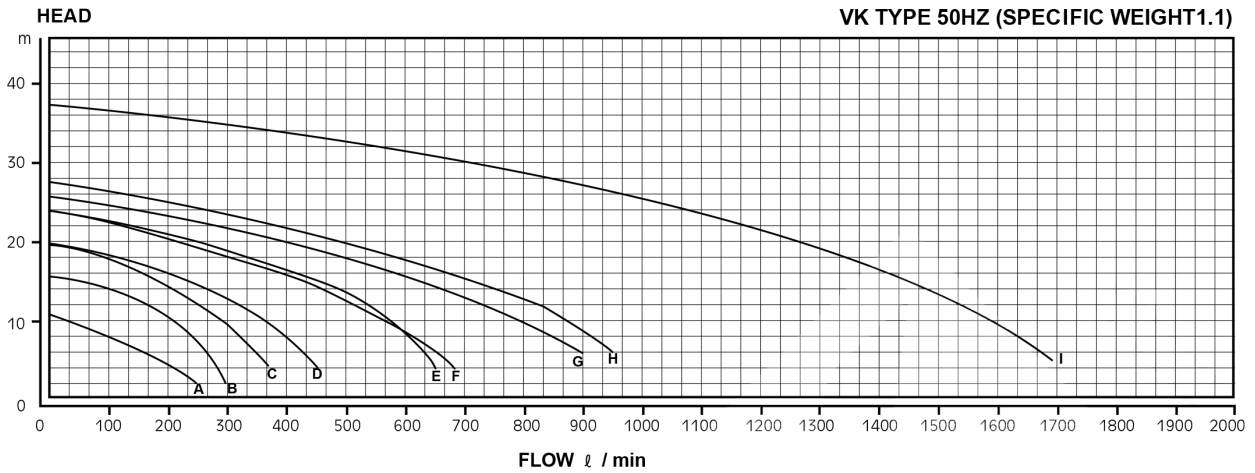
**Material**

- F - FRPP
- C - CFRPP
- A - CPVC
- P - PVDF
- S - SUS316

**Notes**

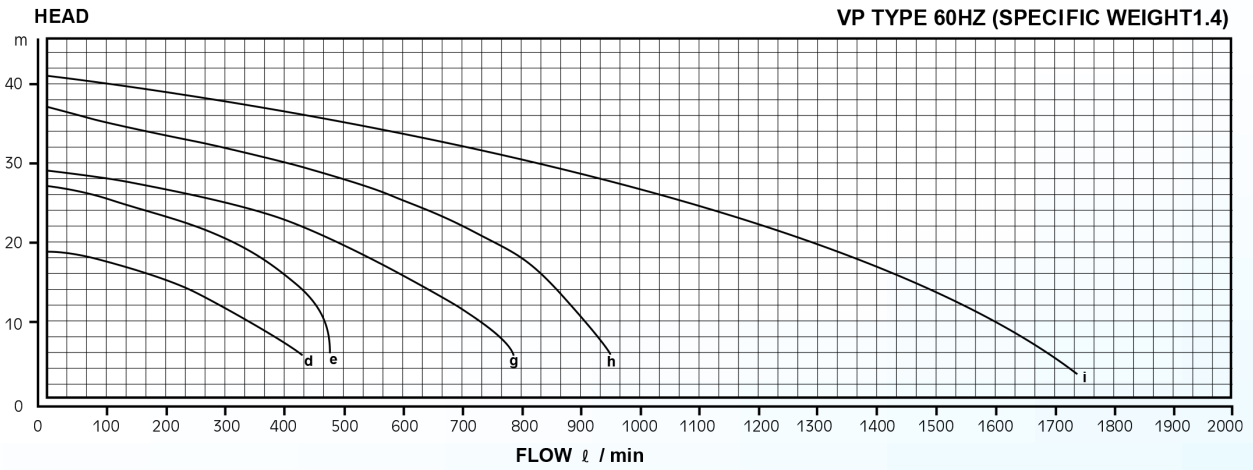
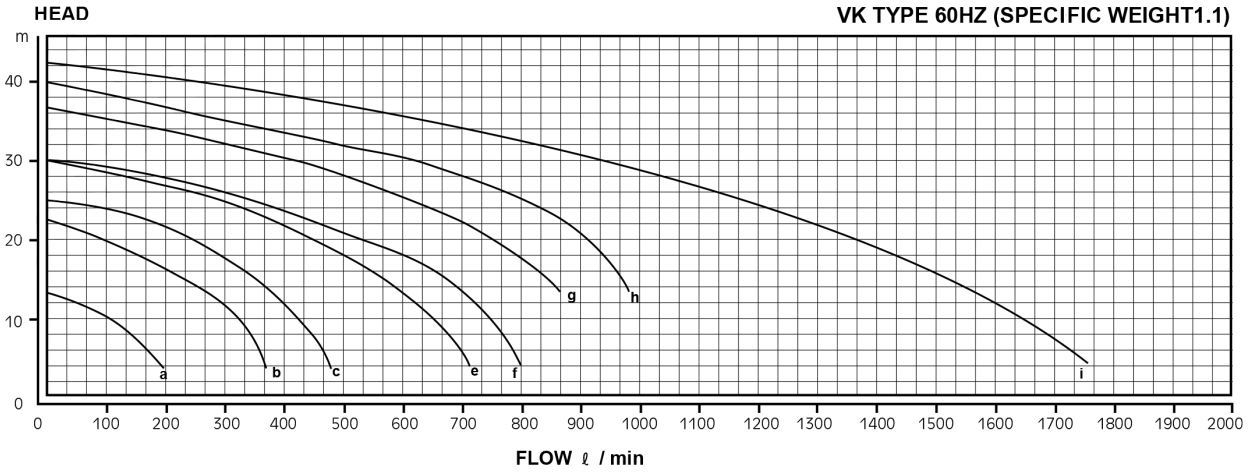
- B - Motor Spacer is FRPP
- H - High Head

## VK / VP TYPE 50HZ



MODEL	NO	IN-OUTLET		HP	FLOW (L/Min)		HEAD (M)		Kg
		IN	OUT		VK	VP	VK	VP	
KD-41VK-15	A	50	40	1	175	-	6	-	29
KD-42VK-25	B	50	40	2	190	-	12	-	38
KD-42VK-35	C	50	40	3	270	-	12	-	41
KD-50VK(P)-35	D	65	50	3	330	290	12	12	41
KD-50VK(P)-55	E	65	50	5	470	400	14	14	55
KD-65VK-55	F	80	65	5	500	-	14	-	55
KD-65VK(P)-7.55	G	80	65	7.5	590	500	16	18	95
KD-65VK(P)-105	H	80	65	10	590	570	18	18	106
KD-100VK(P)-155	I	100	80	15	1000	800	27	29	155

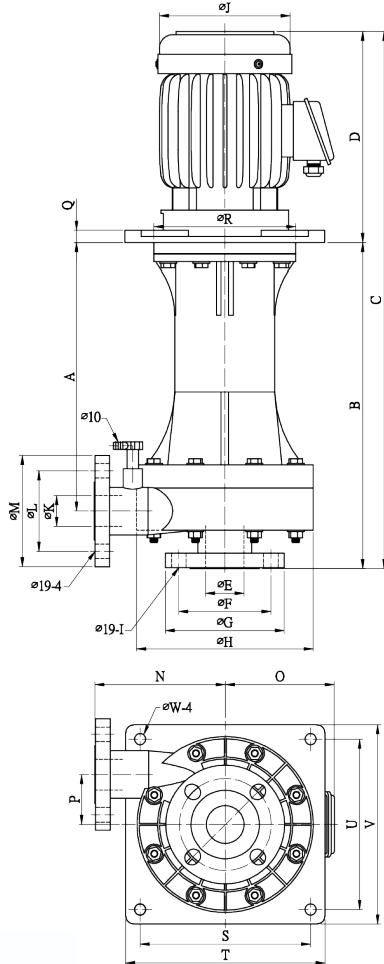
# VK / VP TYPE 60HZ



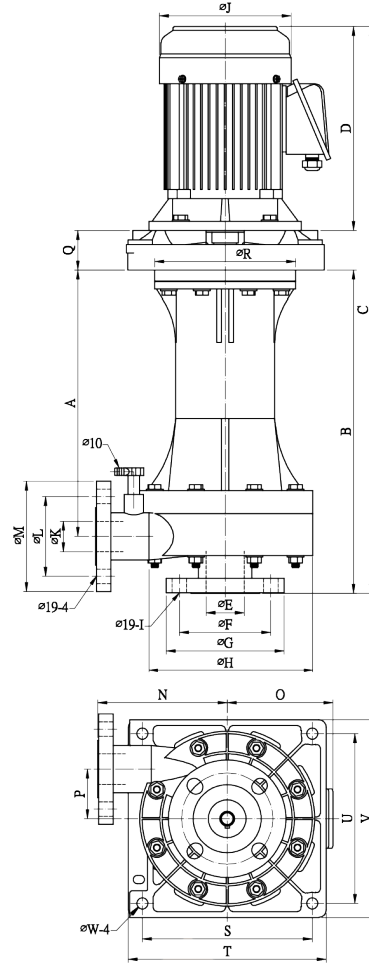
MODEL	NO	IN-OUTLET		HP	FLOW (L/Min)		HEAD (M)		Kg
		IN	OUT		VK	VP	VK	VP	
KD-41VK-16	a	50	40	1	120	-	8	-	29
KD-42VK-26	b	50	40	2	300	-	10	-	38
KD-42VK-36	c	50	40	3	350	-	14	-	41
KD-50VP-36	d	65	50	3	-	300	-	12	41
KD-50VK(P)-56	e	65	50	5	550	430	15	15	55
KD-65VK-56	f	80	65	5	650	-	15	-	55
KD-65VK(P)-7.56	g	80	65	7.5	780	600	18	16	95
KD-65VK(P)-106	h	80	65	10	890	800	20	18	106
KD-100VK(P)-156	i	100	80	15	1200	1000	25.5	29	155

## DRAWING & DIMENSIONS

### KD SERIES



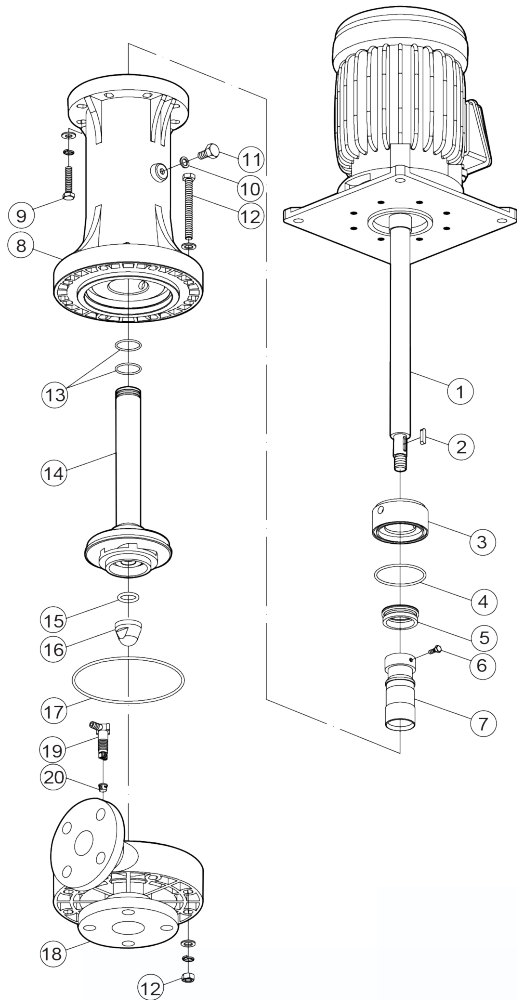
### KD-B SERIES



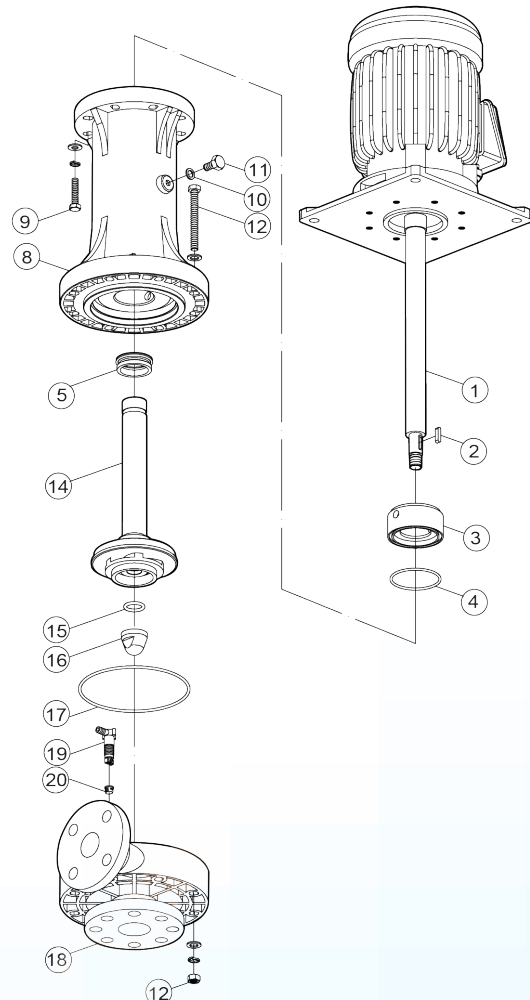
MODEL	A	B	C	D	E	F	G	H	I	J	K	L	M	N	O	P	Q	R	S	T	U	V	W
KD-41VK-1	353	423	698	275	50	120	155	230	4	170	40	105	145	170	142	65	16	185	222	260	222	260	15
KD-42VK-2	353	423	751	328	50	120	155	230	4	202	40	105	145	170	156	65	16	185	222	260	222	260	15
KD-42VK-3	353	423	751	328	50	120	155	230	4	202	40	105	145	170	156	65	16	185	222	260	222	260	15
KD-50VP-3	352	427	790	363	65	130	175	260	4	202	50	120	155	170	177	65	16	185	222	260	222	260	15
KD-50VK(P)-5	352	427	790	363	65	130	175	260	4	243	50	120	155	200	177	65	16	185	222	260	222	260	15
KD-65VK-5	352	427	790	363	80	150	190	260	8	243	65	140	175	200	177	65	16	185	222	260	222	260	15
KD-65VK(P)-7.5	352	427	862	435	80	150	190	260	8	285	65	140	175	200	212	65	20	185	300	350	300	350	18
KD-65VK(P)-10	352	427	862	435	80	150	190	260	8	285	65	140	175	200	212	65	20	185	300	350	300	350	18
KD-41VK-1-B	353	423	743	268	50	120	155	230	4	173	40	105	145	165	135	68	52	185	222	260	222	260	15
KD-42VK-2-B	353	423	785	310	50	120	155	230	4	195	40	105	145	165	150	68	52	185	222	260	222	260	15
KD-42VK-3-B	353	423	785	310	50	120	155	230	4	195	40	105	145	165	150	68	52	185	222	260	222	260	15
KD-50VP-3-B	352	427	789	310	65	130	175	260	4	195	50	120	155	195	150	65	52	185	222	260	222	260	15
KD-50VK(P)-5-B	352	427	819	340	65	130	175	260	4	195	50	120	155	195	150	65	52	185	222	260	222	260	15
KD-65VK-5-B	352	427	819	340	80	150	190	260	8	195	65	140	175	198	150	64	52	185	222	260	222	260	15
KD-65VK(P)-7.5-B	352	427	844	364	80	150	190	260	8	270	65	140	175	198	205	64	53	185	300	350	300	350	18
KD-65VK(P)-10-B	352	427	844	364	80	150	190	260	8	270	65	140	175	198	205	64	53	185	300	350	300	350	18

# CONSTRUCTIONS

KD 1~5HP



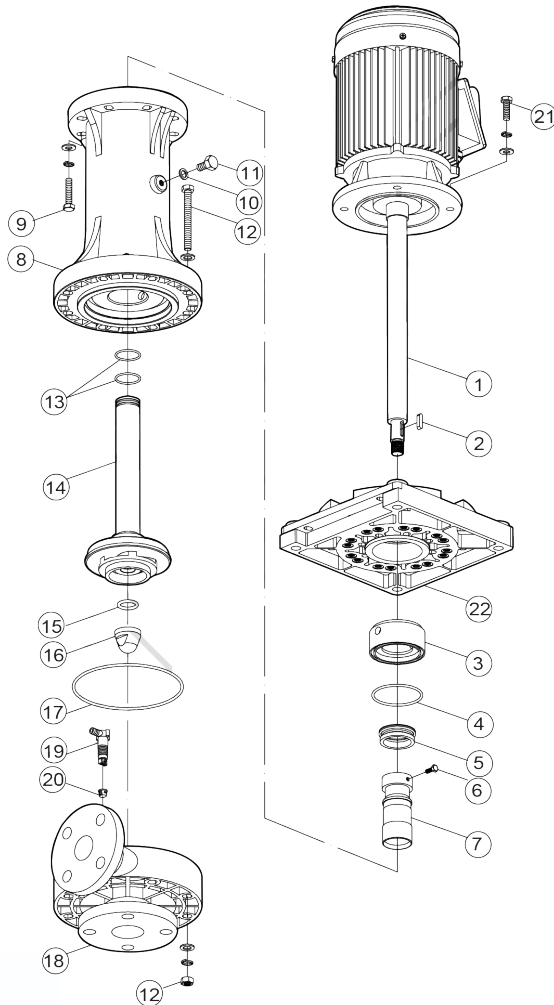
KD 7.5~15HP



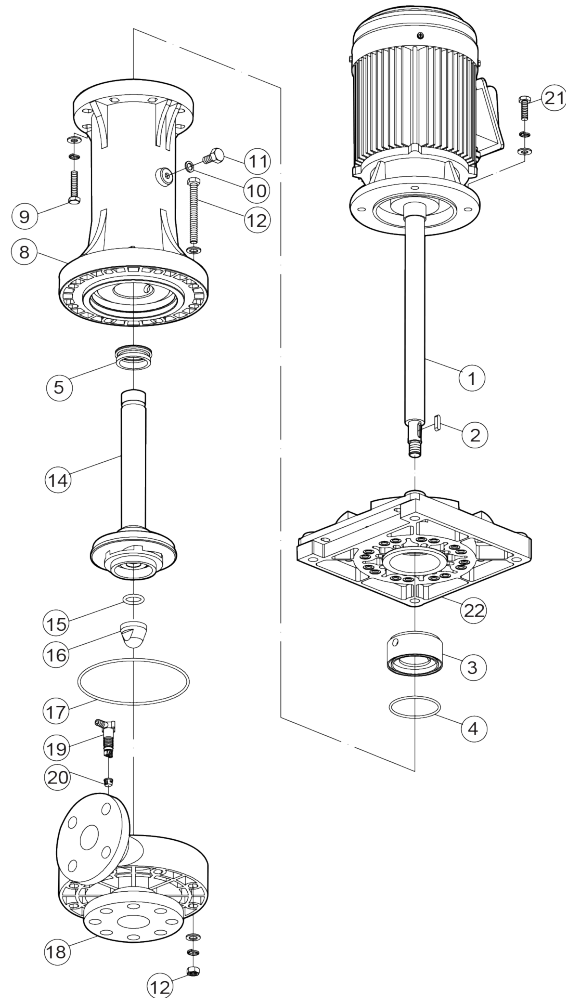
- Pumps are manufactured from the four materials (FRPP, CFRPP, CPVC, PVDF) to ensure resistance to high heat and corrosion.
- Dry vapor seal (1~10HP): To prevent pumps and bearings from being etched by chemical gas and prolong the life of the pump.
- For etching spraying equipments, cooling circulating and be used with filter.
- Pumps are no damaged in drying running.
- Ti screws and EPOXY coating on motors are used to increase the corrosion resistance and life span in the strong etching chemical solution environment.
- Compared to traditional FC motor front cover, motor spacer which is innovatively made of FRPP can dramatically weaken acid corrosion and reduce the weight of machine.

## CONSTRUCTIONS

KD-B 1~5HP



KD-B 7.5~15HP



NO	DESCRIPTION	MATERIAL
1	Motor	FC / AL
2	Shaft Key	SUS
3	Ceramic	FRPP / CFRPP / CPVC PVDF / CERAMIC
3-1	Ceramic O-ring	EPDM / VITON
4	Vapor Seal O-ring	NBR / EPDM / VITON
5	Vapor Seal	NBR / EPDM / VITON
6	Shaft Sleeve Screw	SUS
7	Shaft Sleeve	FRPP / CFRPP / CPVC PVDF / SUS
8	Main Body	FRPP / CFRPP / CPVC PVDF / SUS
8-1	Main Body O-ring	NBR
9	Main Body Screw	SUS
9-1	Main Body Screw Cap	NBR
10	Release Screw Packing	EPDM / VITON
11	Release Screw	PVC
12	Front Cover Screw	SUS

NO	DESCRIPTION	MATERIAL
13	Impeller O-ring	NBR / EPDM / VITON
14	Impeller	FRPP / CFRPP / CPVC / PVDF SUS
15	Impeller Nut O-ring	NBR / EPDM / VITON
16	Impeller Nut	FRPP / CFRPP / CPVC / PVDF SUS
16-1	Impeller Nut Spring	SUS
16-2	Impeller Nut Packing	TEFLON
16-3	Impeller Nut Washer	SUS
17	Front Cover O-ring	NBR / EPDM / VITON
18	Front Cover	FRPP / CFRPP / CPVC PVDF / SUS
19	Air Release Valve	FRPP / CFRPP / CPVC PVDF
20	Air Release Valve Packing	NBR / EPDM / VITON
21	Motor Screw	SUS
22	Motor Spacer	FRPP